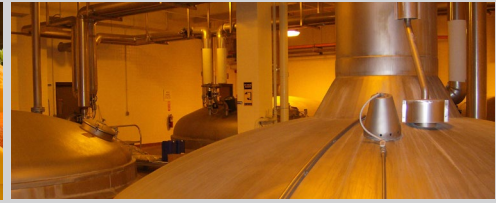
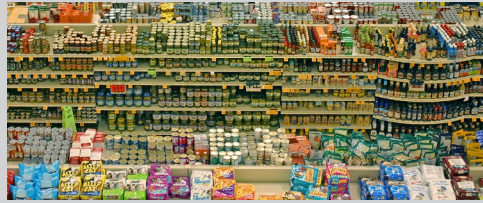


# Services for Food & Beverage Processors



WISCONSIN MANUFACTURING  
EXTENSION PARTNERSHIP

The WMEP offers services designed to help Food & Beverage businesses grow and thrive. Complete solutions include Certification and Compliance, Operational Efficiency, Workforce Development, and finding opportunities for Growth. Whatever the challenge or opportunity may be, the WMEP has the solution for you.



## Certification/Quality



### Certification Achievement

Certifications can be used to generate consistent results and engage new customers, WMEP provides proven systems & processes to take the guesswork out of certification. Certifications include:

- ▶ SQF
- ▶ PCQI
- ▶ BRC
- ▶ HACCP
- ▶ FSSC-22000
- ▶ GMP



### Audits

- ▶ Internal Audits: Conducted to eliminate the unknown, lower risk and prepare for success
- ▶ Audit Prep: Alleviate stress and uncertainty by preparing for your next food safety audit
- ▶ Audit Remediation: Achieve compliance goals quickly and efficiently



### Continuous Improvement

Establish a culture that sets new performance standards every day. A culture of continuous improvement typically includes:

- ▶ Build an enterprise-wide culture of measurable continuous improvement
- ▶ Reduce lead times and eliminate waste using Lean Practices
- ▶ Improve quality by reducing defects and variability (Six Sigma, ISO)
- ▶ Investing in technology and training to drive continuous improvement



### ISO-14000

WMEP can help with guidelines and a framework to systematize and improve your environmental management efforts.





## Operational Efficiency

Save money and increase efficiency with market-proven, Lean manufacturing tools and best practices:

- ▶ Optimizing operations
- ▶ Waste reduction
- ▶ Automation (robotics)



## Workforce Development (Human Capital)

Create processes and programs that help you identify, attract, motivate, develop, and retain a positive workforce.

- ▶ Employee retention
- ▶ Employee skill development
- ▶ Talent attraction
- ▶ Change management



## Growth

Complete growth solutions based on a manufacturer's needs:

- ▶ Strategic Planning/Visioning
- ▶ Market Diversification
- ▶ New Product Development
- ▶ Certifications (expanded market potential)
- ▶ Technology Scouting
- ▶ Exportech



**Getting started is as simple as a conversation with a WMEP Consultant, who will work with you to determine the right path toward optimizing your business.**

Contact George Bureau by calling 920.450.7185 or via email: [bureau@wmep.org](mailto:bureau@wmep.org)

Visit us at: [www.wmep.org](http://www.wmep.org)



**WISCONSIN MANUFACTURING**  
EXTENSION PARTNERSHIP

2601 CROSSROADS DRIVE | SUITE 145 | MADISON, WI 53718